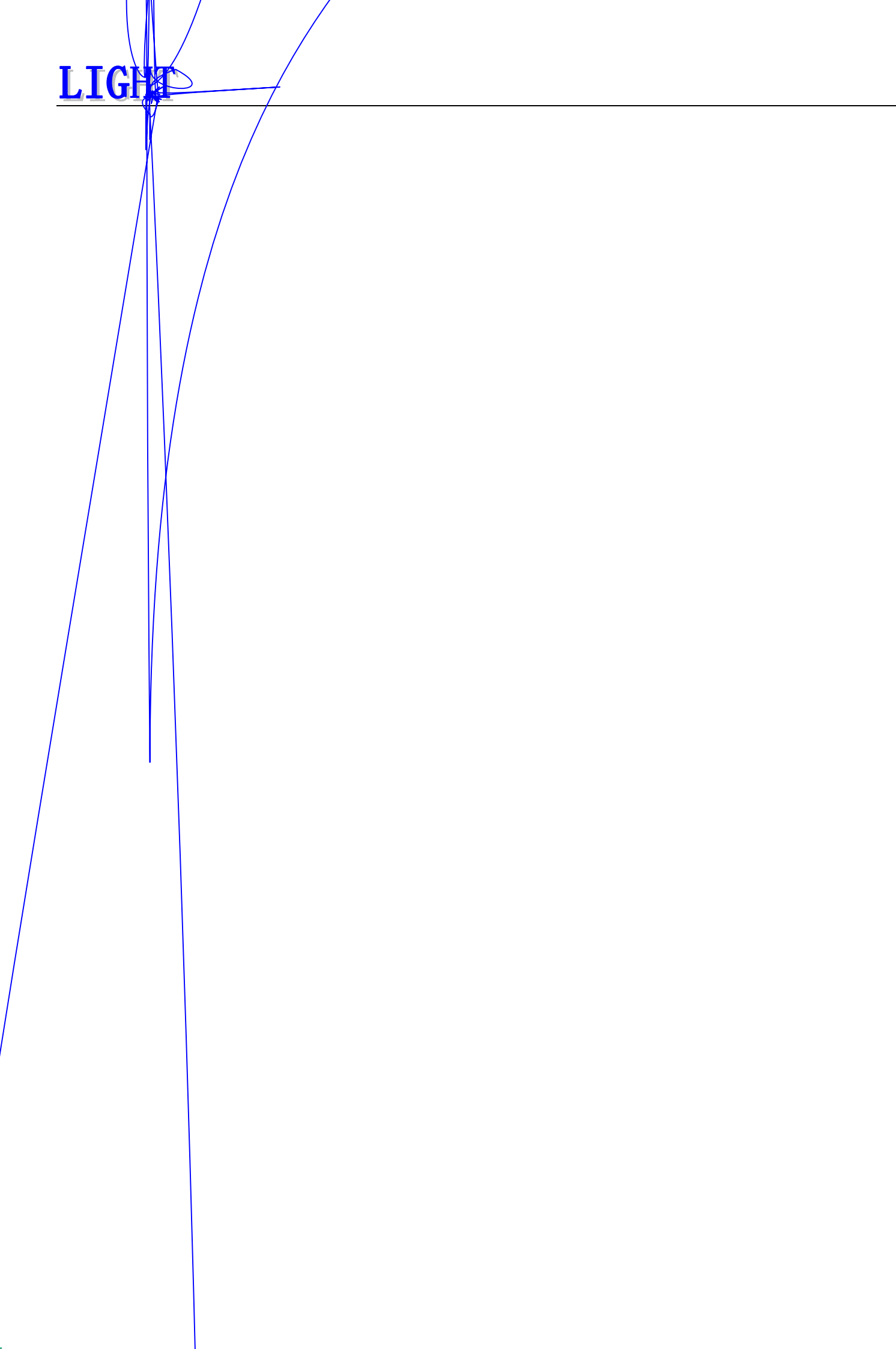


LIGHT

LIGHT



Electro-Optical Characteristics

◇ 18

参数名称		符号	数值	单位

◇ 18
Electro-Optical Characteristics (Temperature=25°C)

参数名称	符号	条件	颜色	最小值	典型值	最大值	单位
							μ
	λ						
	Δλ						
	θ						

以上 厂商

manufacturer.

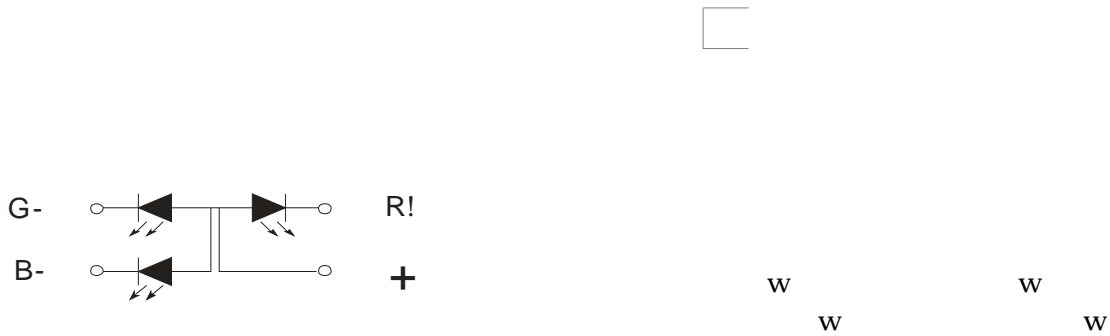
Reliability Test Items And Conditions

实验项目	参考标准	实验条件	时间	样品数	判据
		←→			

Product design and operational recommendation

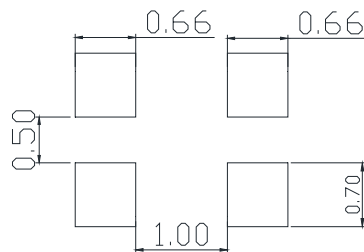
1 mm

Product design Unit: mm



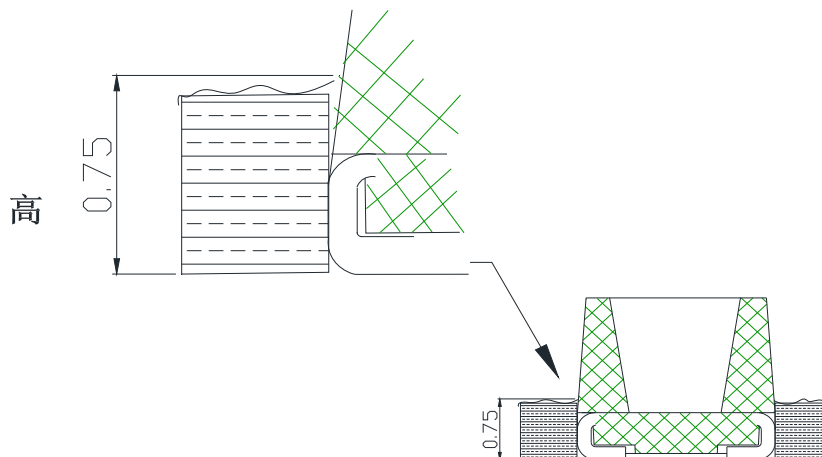
2 mm

Recommended soldering pad (Unit: mm)



3 0.75mm

Recommendation for glue filling: filling height must be higher than or equal to 0.75mm



1

Packaging (1)

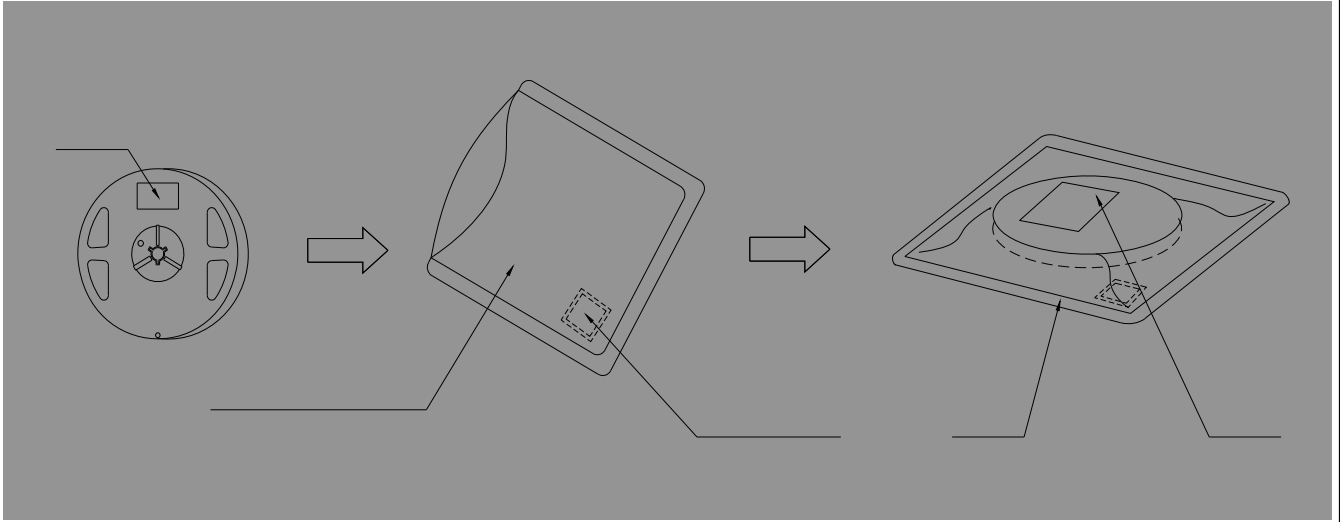
✧ Carrier Tape

✧

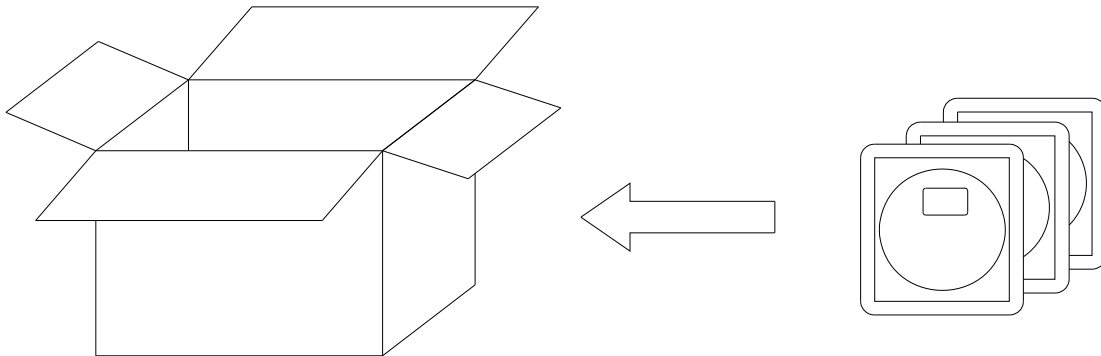
2

Packaging(2)



✧ **Moisture Proof and Anti-Electrostatic Foil Bag**



✧ **Cardboard Box**



✧ **Label Explanation**

LIGHT	Light Electronics CO., LTD.	
TYPE NO.:	_____	 <small>LOT NO.</small>
QUANTITY:	_____	
BIN:	_____	
DATE CODE:	_____	
REMARKS:	_____	

LIGHT



Guideline for Soldering (2)

- x ·
- x ·
- x ·
- x ·

(1)

Precautions (1)

1.

Storage

•

•

•

•

•

y

y

y

2.

Static Electricity

•

•

•

(2)

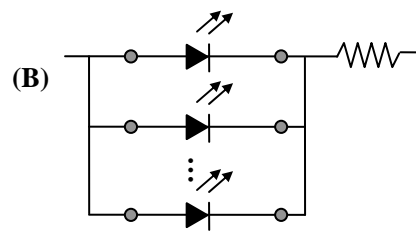
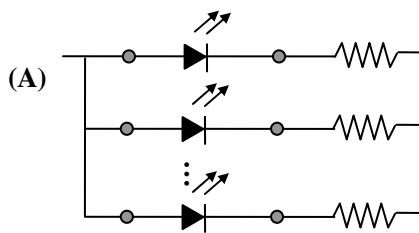
Precautions (2)

3.

Design Consideration

-

-



-

4.

Reverse voltage protection

-

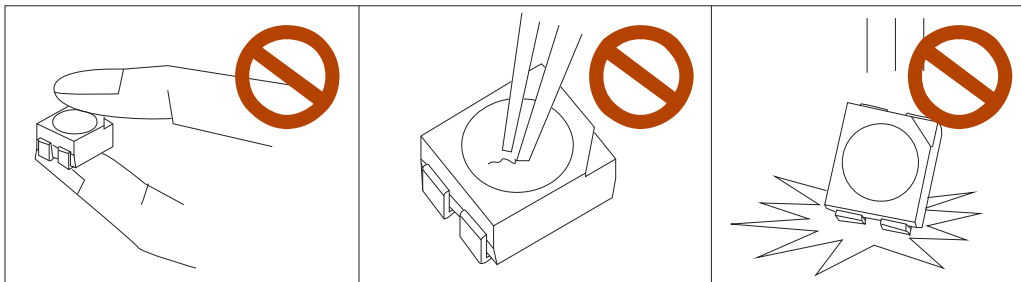
5.

The safe temperature for LEDs working

-

6.

-



-